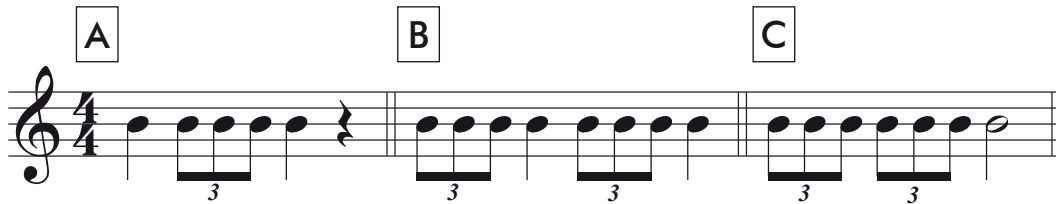


Triolen



Drei Triolenachtel entsprechen einer Zählzeit. Sie werden deshalb etwas schneller gespielt als normale Achtelnoten.

Rhythmische Vorübungen



Worried Man Blues



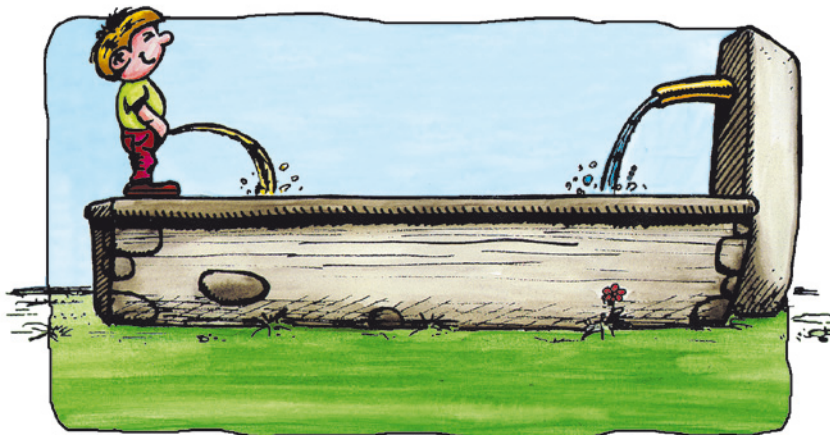
2+3

Barbara Allen

aus England

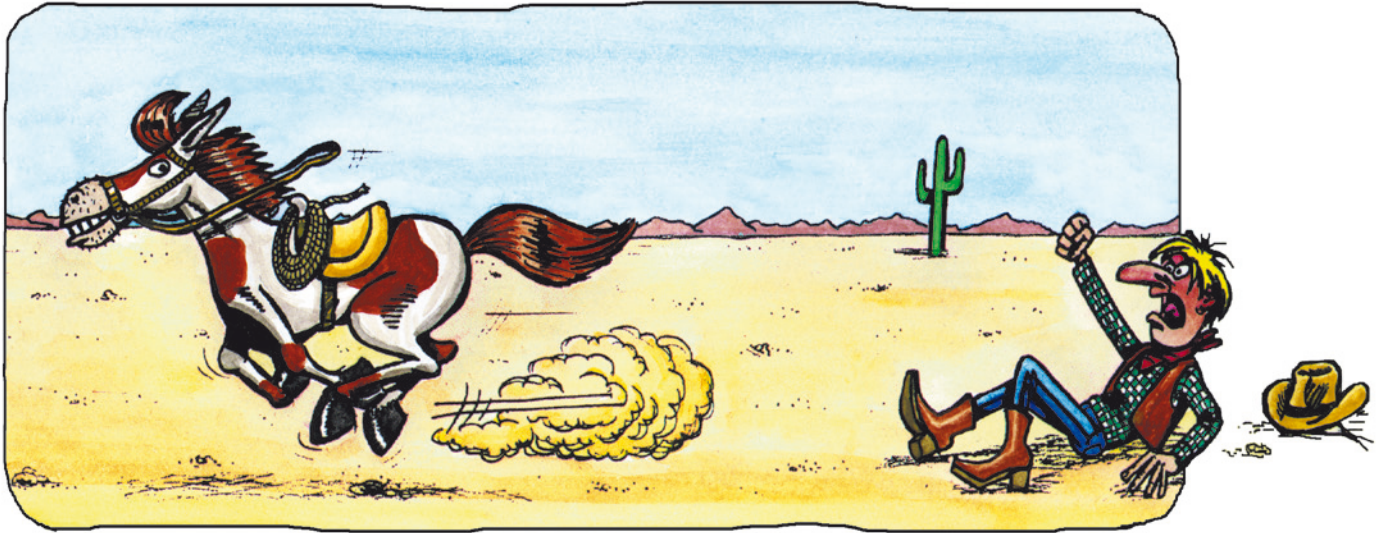
Wenn alle Brunnlein fließen

Musical score for the first system of the song. It consists of four staves of music in 4/4 time, key of B-flat major. The first staff is marked *mf* (2.xp) and includes a first ending bracket labeled (b). The second staff is marked *mf*. The third and fourth staves continue the melody.



Aufzug 4

Musical score for the 'Aufzug' section, consisting of four systems of piano accompaniment in 4/4 time, key of B-flat major. The first system starts with a forte (*f*) dynamic and features a triplet of eighth notes. The second system continues with a forte (*f*) dynamic and another triplet. The third system is marked mezzo-forte (*mf*) and features a triplet of eighth notes. The fourth system is marked forte (*f*) and features a triplet of eighth notes.



Mustang  14+15 

Musical score for 'Mustang' in 2/4 time, key of B-flat major. It consists of three staves:

- Staff 1: *mf* (mezzo-forte)
- Staff 2: *f* (forte)
- Staff 3: *mf* (mezzo-forte), *mp* (mezzo-piano), and *decrescendo* (decreasing volume).

decrescendo (dekräschändö) = decresc. = leiser werden

Anicka

Musical score for 'Anicka' in 2/4 time, key of B-flat major. It consists of two staves:

- Staff 1: *mp* (mezzo-piano)
- Staff 2: *(2.x mf)* (two times mezzo-forte)

London brennt

(Kanon)

Musical score for 'London brennt' (Canon) in 3/4 time, key of B-flat major. It consists of one staff with four parts:

- 1.
- 2.
- 3.
- 4.

The score starts with a dynamic marking of *f* (forte).



Bonsoir, mes amis!



23+24



aus Frankreich

Musical score for "Bonsoir, mes amis!" in 2/4 time, key of B-flat major. The score consists of four staves. The first staff begins with a dynamic marking of *mf*. The melody is simple and rhythmic, with a final double bar line and repeat dots.

Hab' oft im Kreise der Lieben

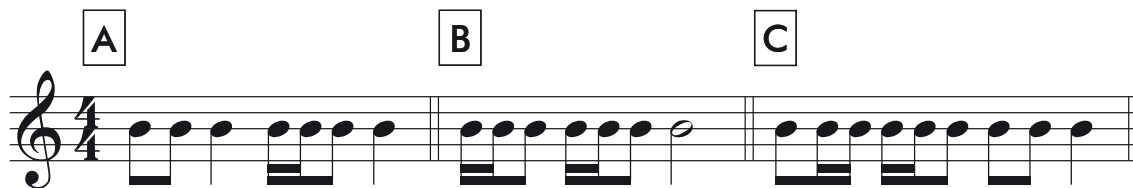
Musical score for "Hab' oft im Kreise der Lieben" in 4/4 time, key of B-flat major. The score consists of three systems of two staves each. The first system starts with a dynamic marking of *mp*. The second system ends with a dynamic marking of *mf*. The third system starts with a dynamic marking of *mf*. The music features a mix of eighth and quarter notes with various articulations and phrasing.

Zwei Sechzehntelnoten + Achtelnote



Die Folge von zwei Sechzehntelnoten und einer Achtelnote ist ein weiterer rhythmischer Baustein, der in vielen Musikstücken vorkommt.

Rhythmische Vorübungen



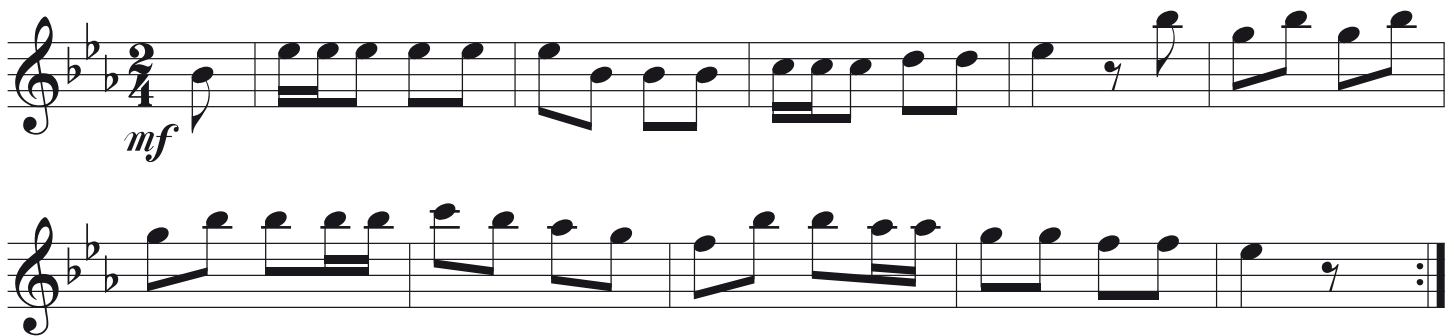
Zu Regensburg auf der Kirchturmspitz



29+30

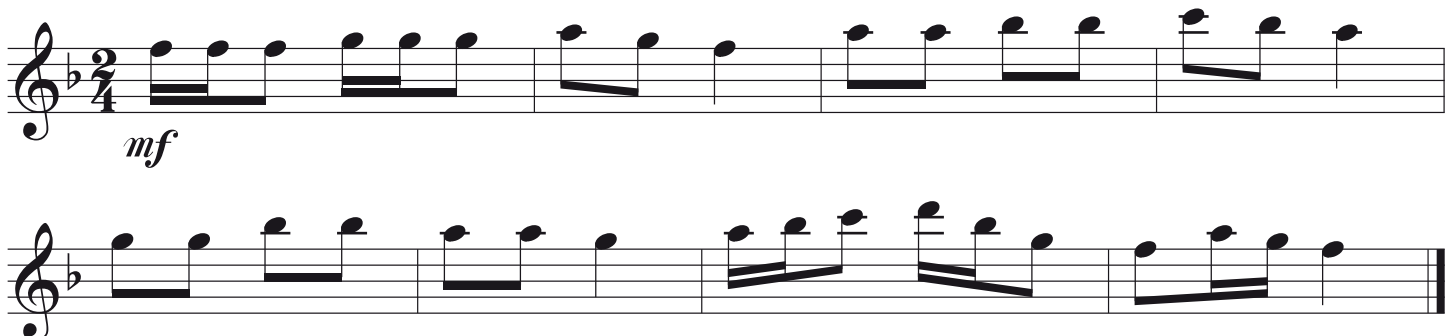


(im 18. Jh. entstanden)



Bäuerlein, Bäuerlein, tick, tick, tack

aus Deutschland



Vive l'amour



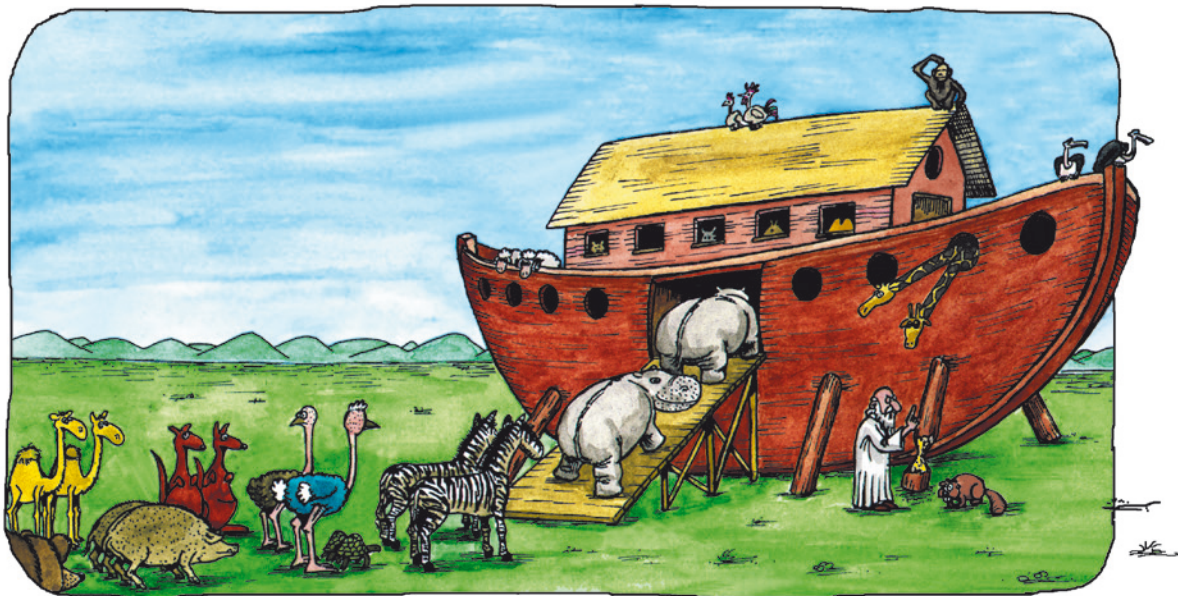
64+65



aus Kanada

fresco (fresko) = lebhaft, frisch

Musical score for 'Vive l'amour' in 6/8 time, key of B-flat major. It consists of three staves. The first staff has a dynamic marking of *mf* (2.xmp). The second and third staves have a dynamic marking of *mf*.



The Animals went in Two by Two

aus England

Musical score for 'The Animals went in Two by Two' in 6/8 time, key of B-flat major. It consists of four staves. The first staff has a dynamic marking of *mp*. The second staff has a dynamic marking of *mf*. The third and fourth staves have a dynamic marking of *f* and a decrescendo marking (*decresc.*).

Der $\frac{2}{2}$ -Takt

Im $\frac{2}{2}$ -Takt erhält jede halbe Note einen Taktschlag.

Rhythmische Vorübungen

Beide Linien klingen gleich. Im $\frac{2}{2}$ -Takt entspricht eine halbe Note einer Zählzeit. Im $\frac{2}{4}$ -Takt entspricht eine Viertelnote einer Zählzeit.

The exercises are divided into three sections: A, B, and C. Each section shows two staves: the top staff is in $\frac{2}{2}$ time and the bottom staff is in $\frac{2}{4}$ time. Below each staff are arrows indicating foot-tapping ('Fußschlag') for each note.

- Section A:**
 - Staff 1 ($\frac{2}{2}$): Two half notes, then two quarter notes, then a half note.
 - Staff 2 ($\frac{2}{4}$): Two quarter notes, then two eighth notes, then a quarter note.
- Section B:**
 - Staff 1 ($\frac{2}{2}$): A dotted half note, then a half note, then a quarter note.
 - Staff 2 ($\frac{2}{4}$): A dotted quarter note, then an eighth note, then a quarter note.
- Section C:**
 - Staff 1 ($\frac{2}{2}$): A quarter note, then a half note, then two quarter notes, then a half note.
 - Staff 2 ($\frac{2}{4}$): A quarter note, then an eighth note, then a quarter note, then an eighth note, then a quarter note.

Tid rinder ud

aus Dänemark

delicato

p(2.xppp)

I Was Born About Ten Thousand Years Ago



69+70



Spiritual

Das Zeichen ♩ (Allabreve-Zeichen) hat die gleiche Bedeutung wie $\frac{2}{2}$ -Takt.

mf



Thema aus der Oper "Carmen"  90 

Melodie:
Georges Bizet
(1838 - 1875)